

STRENGTHENING RESILIENCE

annual report 2019

IMPACT

Transforming natural resource management
Empowering communities

MISSION

We transform how natural resources are managed in areas where security and human rights are at risk. We investigate and develop approaches for natural resources to improve security, development, and equality. We are an independent non-profit, collaborating with local partners for lasting change.

BUILDING RESILIENCE IN PEOPLE AND COMMUNITIES

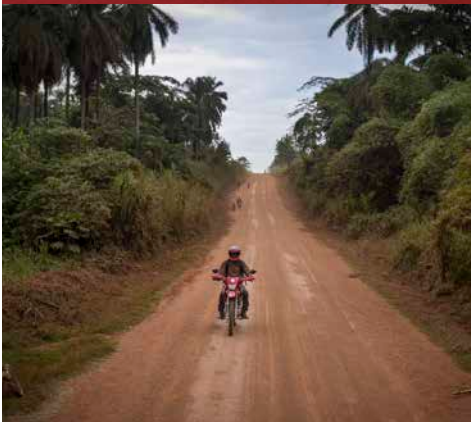
At the center of our work to forge innovative, collaborative solutions to natural resource management is a profound respect for the capacity of people to persist in the face of challenges.

Whether it's women organizing as peacebuilders in conflict and high-risk areas or the artisanal and small-scale mining communities facing down an Ebola epidemic, our partners continue to demonstrate unflinching strength as they strive for equitable peace and development with our support.

2019 saw IMPACT advance ongoing projects while pursuing new ways to support communities.

63 local conflicts affecting women in artisanal gold mining communities in northeastern Democratic Republic of Congo (DRC) were resolved thanks to our Women of Peace project, launched on International Women's Day. Fortified by 14 community-based Peace Hubs trained in the prevention and peaceful resolution of conflicts, women are now active participants in efforts toward peace and non-violence in the area.

Throughout the year, IMPACT helped artisanal gold miners in DRC become more environmentally responsible through the Just Gold project. We supported the mining cooperative to introduce equipment and training to reduce mercury at two mine sites. New mercury amalgamation locations are now decreasing mercury pollution in the local water. With increased awareness, 100% of women miners and 83% of men miners now use the dedicated spots.



Photos: Sven Torfim/IMPACT

Released in November, our report, *A Golden Web: How India Became One of the World's Largest Gold Smuggling Hubs*, describes how gold that is potentially tied to conflict, human rights abuses, and corruption enters the international market through India. One of the first in-depth investigations into India's role as a gold smuggling hub, the report highlights how government policies incentivize illicit trade.

2019 forced us to be flexible.

In DRC, the Ebola epidemic hit the mine sites and communities in Ituri Province with whom IMPACT works. While protecting the health and security of our staff, partners, and beneficiaries, we deployed strategies to ensure our initiatives could withstand this crisis, including by further consolidating partnerships with local organizations.

As the calendar turned to a new year, a new challenge faced us. None of us could have imagined the additional toll a global pandemic would soon take on people, communities, and the environment in areas where we work, as well as on our organization and team.

Trials brought on by forces beyond anyone's control are reminders of how determination and courage can help us weather any storm. Our mission and work continues, even in periods of uncertainty. Together with our partners, we remain resilient.

JOANNE LEBERT
Executive Director

ROLLAND MORIER
Board President



VISION

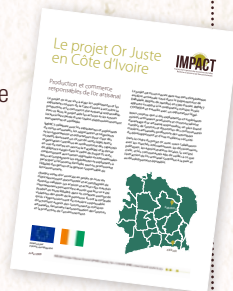
We envision a world where resources contribute to equitable peace and development, and where communities are empowered to decide how their natural resources are managed.



2019 GLANCE

JANUARY

- We kick off the Just Gold project in Côte d'Ivoire with funding from the European Union. The project will support artisanal gold miners, mining cooperatives, traders, and exporters to ensure artisanal gold from Côte d'Ivoire is produced and sold according to international standards.
- In Democratic Republic of Congo (DRC), we support the artisanal gold mining cooperative CODEMA in establishing and implementing its business plan. The Just Gold project helps CODEMA provide artisanal miners with technical assistance, including training and equipment.



FEBRUARY

- An international documentary launches featuring women artisanal gold miners from our Just Gold project in DRC. *The Shadow of Gold* explores where gold comes from, reveals positive advancements in the industry, and engages with various players who work with miners to tackle gold's worst environmental and social problems.
- After a final workshop to refine a new resource we helped develop, the *Civil Society Toolkit on Supply Chain Risks*, organizations undertake a final mission to mine sites in the Great Lakes region and use the toolkit to report on risks they find at the sites such as the presence of human rights violations and corruption. These reports are made available on the website of the Great Lakes Regional Civil Society Coalition against the Illegal Exploitation of Natural Resources (COSOC-GL), which the private sector can access to carry out due diligence on their supply chains.

MARCH

- We launch the Women of Peace project in DRC with a presentation for policymakers and community members in Mambasa led by *Solidarité Féminine Pour la Paix et le Développement Intégral* (SOFEPADI) and *Fonds pour les Femmes Congolaises* (FFC). Funded through the Swiss Department of Foreign Affairs and Global Affairs Canada, the project supports women artisanal miners to be at the heart of peaceful solutions to conflicts relevant to them, their families, and communities.

“ There will never be peace if women don't **PARTICIPATE** in peace negotiations. ”

Julienne Lusenge, Executive Director of FFC, speaking to community members in Mambasa.



- On International Women's Day (March 8), we launch a video highlighting how the Network for the Empowerment of Women in Mining Communities (known by the French acronym REAFECOM) has successfully amplified women's voices in the community. The video was broadcast for members of REAFECOM and other grassroots women's associations at a community celebration for REAFECOM, the first network of women artisanal gold miners in DRC's Ituri Province.

APRIL

- 14 Peace Hubs located at the artisanal mining communities and mine sites are established by REAFECOM. 48 women are members of the Peace Hubs and are trained in the prevention and peaceful resolution of conflicts. They gain new skills in mediation and negotiation, allowing women to actively participate in efforts towards peace and non-violence in the area.

14 Peace Hubs help to peacefully resolve **63** local conflicts through **189** mediation sessions. Mediation is most often related to psychological, physical, and economic violence affecting women within their homes and families, or related to land and interpersonal disputes.

- At the OECD Forum on Responsible Mineral Supply Chains in Paris, we echo the call for local voices to be part of the dialogue, including artisanal miners. We help enable a video intervention from Josée Atigwe, an artisanal woman gold miner from DRC, about the important role traceability and mining play in her economic empowerment.

- We lead a workshop in Zambia to support officials from the Zambian and Ugandan Ministries of Mines in implementing the International Conference of the Great Lakes Region's (ICGLR) Regional Certification Mechanism. Over five days, we contribute to the development of a mine site inspection manual and export procedures.

MAY

- We support REAFECOM to expand its work on gender-based violence and women's security through the Women of Peace project. In concert with other local organizations, REAFECOM begins accompanying survivors of sexual violence through legal processes, mediation, advocacy, and awareness raising.

In **2019**, REAFECOM accompanied **70** survivors of rape from DRC's artisanal gold mining communities to access health care, psychological support, and legal services. In the **35** cases of minors, the alleged perpetrator was a member of the family or close community.

JUNE

- We complete the prototype for the ICGLR's Regional Database on Mineral Flows, representing a major milestone in our ongoing support to implement the six tools of the ICGLR's Regional Initiative against the Illegal Exploitation of Natural Resources. The database, which will store publicly accessible information to monitor and track the flow of tin, tantalum, tungsten, and gold, is presented to ICGLR Member States for evaluation.
- Community dialogues on women, peace, and security kick off across mining communities in DRC as part of the Women of Peace project. Over the year, two rounds of 12 dialogues bring together some 2,000 miners—60% women and 40% men—from six mining communities.

JULY

- We join Human Rights Watch, Global Witness, the Enough Project, and many other signatories in an open letter calling on the Responsible Jewellery Council to reform its auditing and certification process to make it more substantive and transparent.
- As the Ebola epidemic that began in August 2018 evolves, we heed recommendations from the World Health Organization and local authorities by temporarily closing our DRC office in Mambasa, Ituri Province. We continue supporting local partners in Mambasa from a distance, including CODEMA, REAFECOM, CVAP, and the artisanal mining community.

AUGUST

- We introduce Knowledge for Impact, a social enterprise with two primary goals: to support partners to confidently know what type of lasting change they are making on the ground; and to empower local actors in the supply chain to own their data and claim its value to advance development, peace, and equality.

SEPTEMBER

- With funding from BMW, BASF, Samsung SDI, and Samsung Electronics, the Cobalt for Development project launches with an aim to sustainably improve the living and working conditions of people employed in the artisanal cobalt sector and surrounding communities. The project is being implemented at a pilot mine in Democratic Republic of Congo by GIZ in collaboration with IMPACT and Good Shepherd International Foundation/Bon Pasteur Kolwezi.

OCTOBER

- We release videos featuring first-hand stories of three members of the new Village Savings and Loan Associations (VSLAs) we established through the Artisanal Mining Women's Empowerment Credit & Savings Project (known by its French acronym AFECOR). 48 groups kick-start a second financial cycle and community volunteers support 20 new VSLAs to begin savings.

“Before the AFECOR project, we didn't know how to save money ... Besides the savings and access to loans, the AFECOR project motivates us because of the Solidarity Fund. Before, everyone was on their own. [Now] ... we can help each other and grow our love and **SOLIDARITY.**”

Modestine Nkuba, a VSLA member in a video about her experience with the AFECOR project.

- We speak out against the stigmatization and singling out of DRC by a new US Customs and Border Protection action requiring companies importing artisanal gold from DRC to provide evidence that it was not mined with forced labour. While the actions of US Customs have the right intent, singling out the DRC further discourages the small number of buyers sourcing from the few traceability initiatives in the country, such as the Just Gold project.
- As part of the Just Gold project in DRC, we support the CODEMA artisanal mining cooperative in adapting its training and equipment for women miners to ensure equal access for all members. An agreement between CODEMA and the network of women artisanal miners, REAFECOM, confirms exclusive management of the equipment by the women members.
- We call for more active implementation of supply chain due diligence at the Responsible Minerals Initiative (RMI) Conference, at the annual members meeting of the Public Private Alliance (PPA), and at the Chicago Responsible Jewelry Conference, emphasizing the importance of evidence to measure its impacts on the UN Sustainable Development Goals.

NOVEMBER

- At the third Conference of the Parties to the Minamata Convention on Mercury in Geneva, we share our experiences working with artisanal gold miners in DRC to implement improved practices around mercury handling and moving towards mercury-free technologies.

“INDIA is at the heart of a web of the illicit trade of gold with threads spanning the globe and almost certainly financing conflict and corruption.”

Joanne Lebert, IMPACT's Executive Director, about India's role as a gold smuggling hub.



- We reveal how government policies in India incentivize illicit trade in our report, *A Golden Web: How India Became One of the World's Largest Gold Smuggling Hubs*. The report uncovers how the country imports approximately 1,000 tons of gold, a quarter more than its official figures indicate, thanks to falsified paperwork and smuggling.

DECEMBER

- Radio spots we produced are broadcast across the Territory of Mambasa in DRC to highlight the role of women at the mine site, in the home, and at decision making tables. The broad sensitization campaign aims to promote the value of women as leaders and decision makers in the community.
- Through our Just Gold project in DRC, we support the artisanal mining cooperative CODEMA to provide training and equipment for miners to reduce and eliminate mercury at two mine sites. One mercury-free processing plant is installed at a mine site and plans are developed to introduce a second plant at another mine site.

BOARD MEMBERS

ROLLAND MORIER

Canada

President

NICOLE PIGGOTT

Canada

Vice-President

YIAGADEESEN (TEDDY)

SAMMY

Canada

Treasurer

ALEX NEVE

Canada

ALLAN RITCHIE

Canada

BRUCE BROOMHALL

Canada

EZRA MBOGORI

Kenya

GAVIN HILSON

United Kingdom

AMBASSADOR

LIBERATA MULAMULA

Tanzania

PAULO DE SA

USA

SUSAN CÔTÉ-FREEMAN

Canada

TESSA HEBB

Canada

TORWOLI DZUALI

Canada

ACKNOWLEDGMENTS

Our work is made possible with the generous financial support we receive from a range of governments, institutions, and non-governmental organizations around the globe. We are deeply grateful for this support.

Dell

European Union

European Partnership on Responsible Minerals

GIZ (*Deutsche Gesellschaft für Internationale Zusammenarbeit*)

Global Affairs Canada

Organization for Economic Co-Operation and Development (OECD)

Swiss Federal Department of Foreign Affairs

Tungsten Industry-Conflict Minerals Council

OUR APPROACH

- The mismanagement of natural resources fuels and sustains crisis around the world.
- Local populations are failing to benefit from resources in their communities, while climate change has heightened competition over minerals, oil, timber, wildlife and water—contributing to violence. Corruption and weak political systems increase the risk of human rights violations.
- We are guided by the core belief and principle that lasting and transformative change in the natural resource sector will come by providing capacity, investment, and spotlight to local actors. Our work focuses on supporting those who suffer the effects and injustice of weak systems—to mobilize and challenge how their resources are being managed.

STATEMENT OF OPERATIONS

REVENUES and Expenses for the Year Ending	March 31, 2020	March 31, 2019
REVENUES		
Global Affairs Canada	2,999,142	3,497,753
European Union	600,628	72,235
Netherlands Enterprise Agency - EPRM	11,070	301,584
German Agency for International Co-operation (GIZ)	592,588	139,056
Swiss Federal Department of Foreign Affairs	150,029	82,623
Organization for Economic Co-operation and Development (OECD)	42,419	16,362
Dell USA L.P.	90,265	241,405
Contributions to PWYP	352,569	193,395
Other	62,309	20,879
Share of profit from investment in Knowledge for Impact Inc.	(15,262)	--
Interest	17,265	6,943
TOTAL	\$4,903,022	\$4,572,235
EXPENSES		
Direct Project Costs	2,305,674	2,201,239
Salaries and Benefits - Canada	1,302,932	1,274,778
Salaries and Benefits - International	749,654	670,812
Project Development	35,768	26,447
Communication (Public Awareness)	51,340	35,802
Administration and Project Support	334,940	318,446
TOTAL	\$4,780,308	\$4,527,524
Excess (deficiency) of revenue over expenses	122,714	44,711



Photo: Zuzia Danielski/IMPACT



IMPACT

Transforming natural resource management
Empowering communities

